

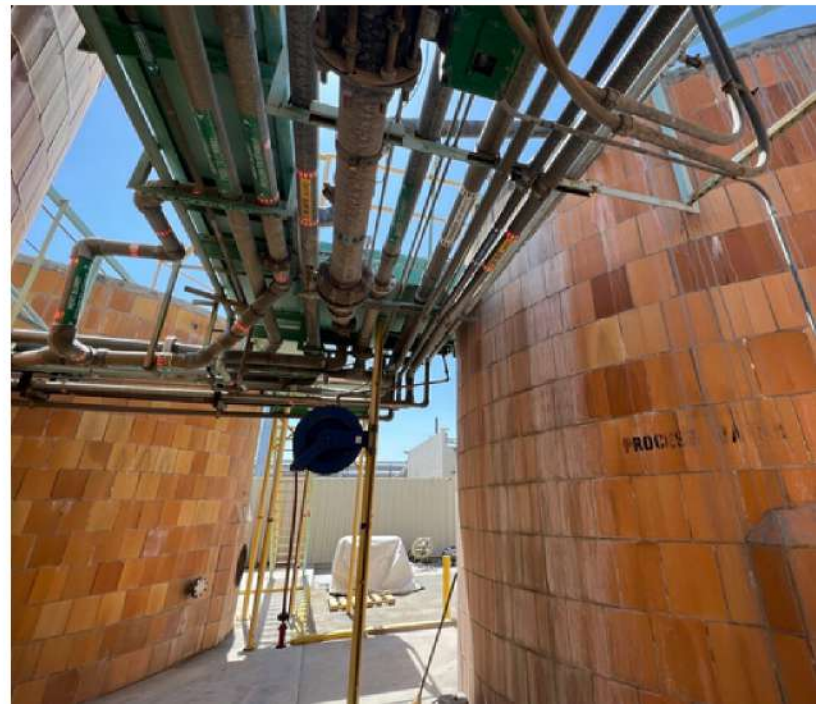
CARBON FIBER HOLDING TANK CRACK REINFORCEMENT

SOUTHERN CALIFORNIA, USA



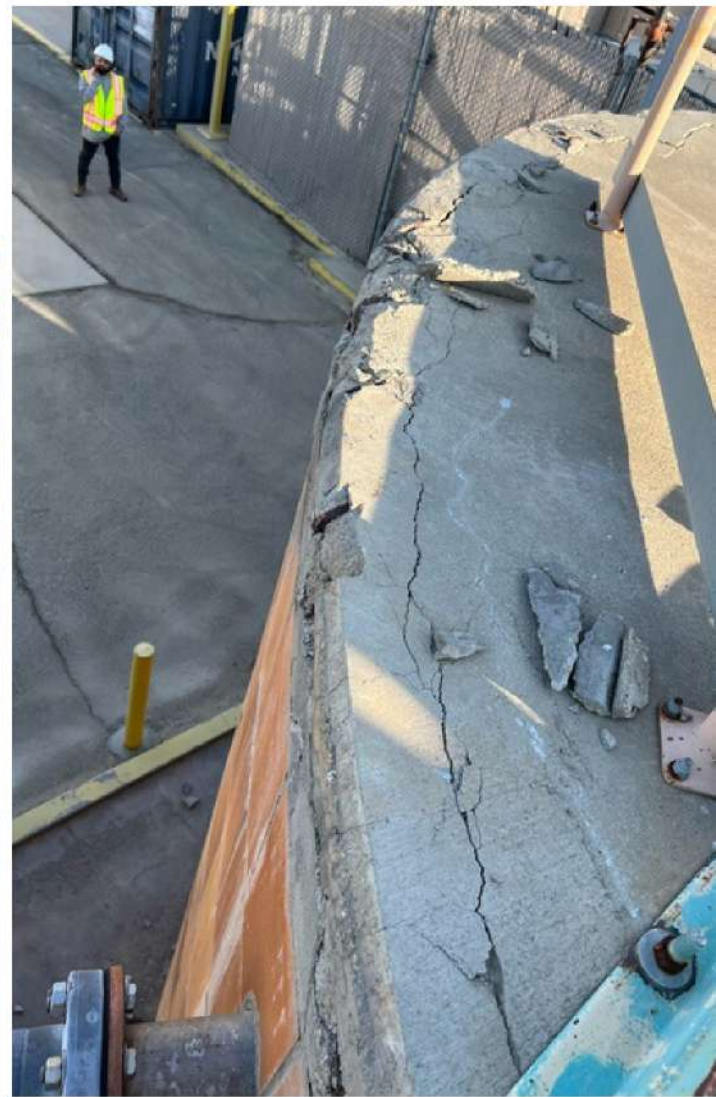
The use of CFRP for crack repair is a great solution that not only confines the cracked concrete but when applied properly, strengthens the structural elements as well. This strengthening may be to handle increased loads, restore damage where rebar section loss is present, or even where elements have failed. Crack confinement with CFRP is invaluable as it not only strengthens areas of broken concrete, but waterproofs these repairs as well.

In this case, Dalinghaus Construction was working with the owners of a large chemical processing plant in Southern California in order to put together a plan for concrete repairs on a few tanks that the owner had concerns with. The main item of concern was the concrete lids on the holding tanks. Representatives from Dalinghaus and SRS walked the site with the owners representative in order to understand the items of concern.





There was a fair amount of cracking on the outer perimeter of the lids as well as around the opening to the tanks. Upon completing the inspection on the tanks, a plan was put together to repair the concrete and confine the entire outside edge of the tanks as well as the tank openings with SRS-660BI.

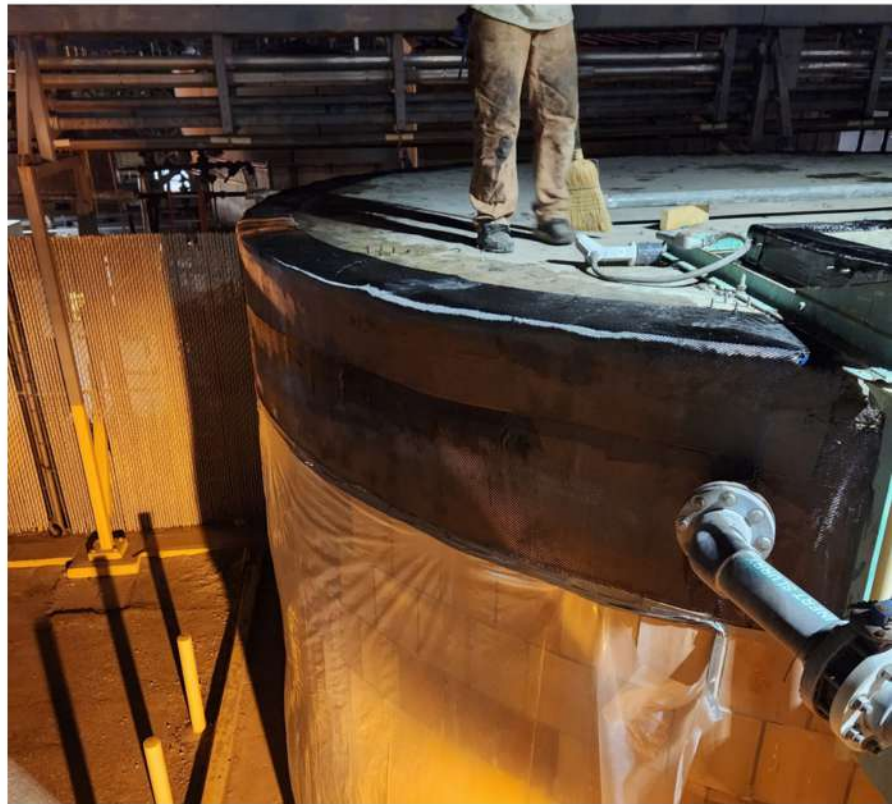
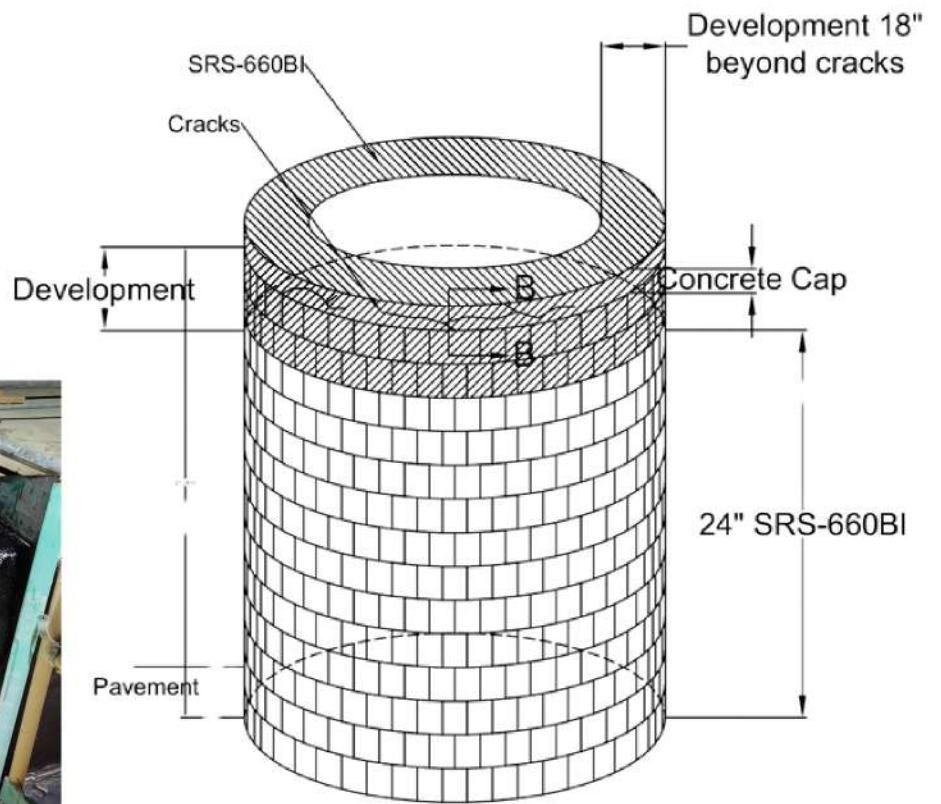
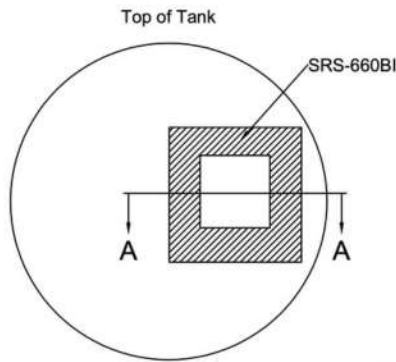


Learn more at [Structuralrs.com](https://www.Structuralrs.com)

1-888-292-2592

Made in the USA

**CARBON
FIBER
STRENGTHENING
SYSTEMS**



Learn more at Structuralrs.com

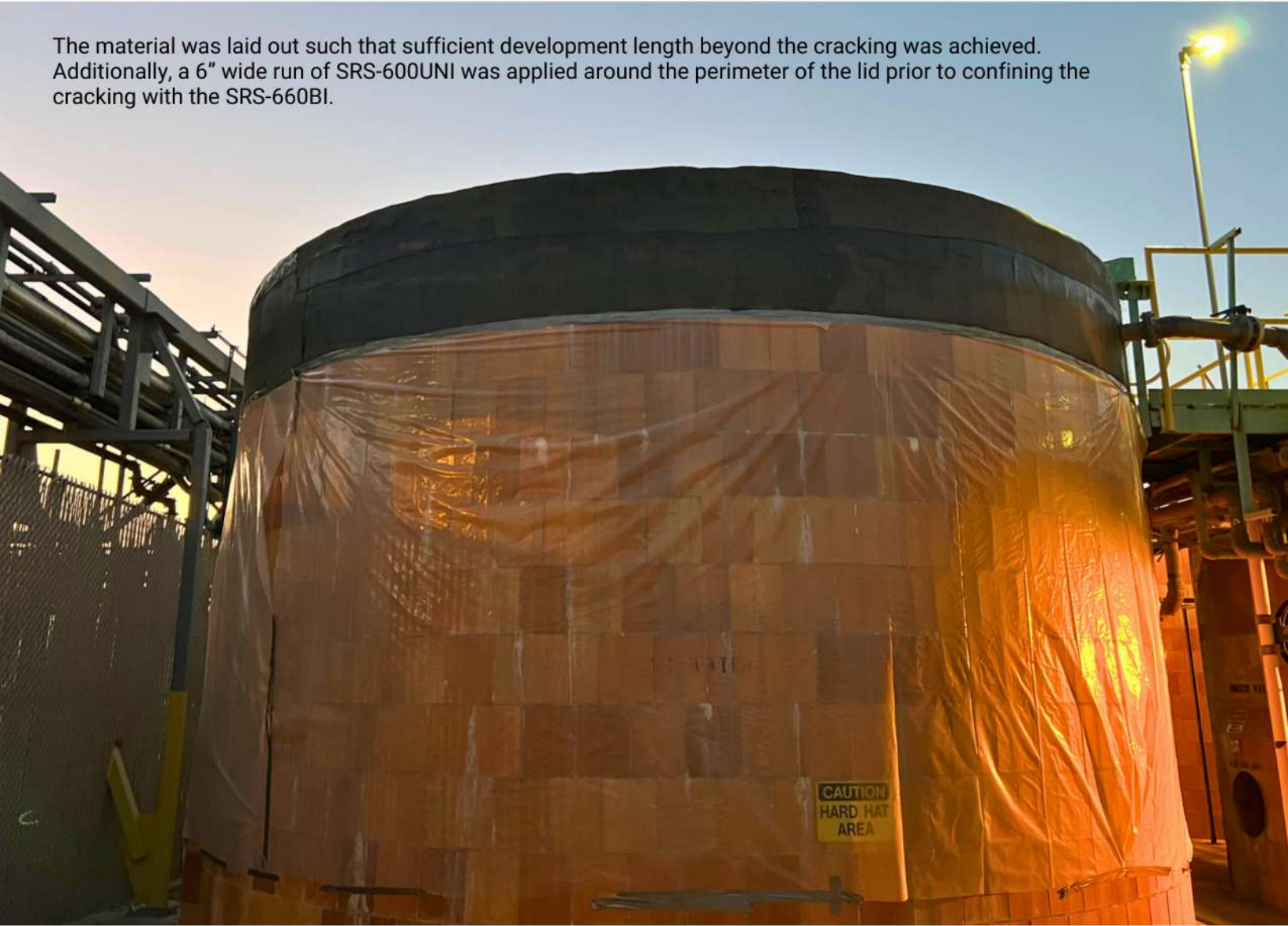
1-888-292-2592

Made in the USA





The material was laid out such that sufficient development length beyond the cracking was achieved. Additionally, a 6" wide run of SRS-600UNI was applied around the perimeter of the lid prior to confining the cracking with the SRS-660BI.



Learn more at [Structuralrs.com](https://www.Structuralrs.com)

1-888-292-2592

Made in the USA

SR **STRUCTURAL**
REINFORCEMENT SOLUTIONS