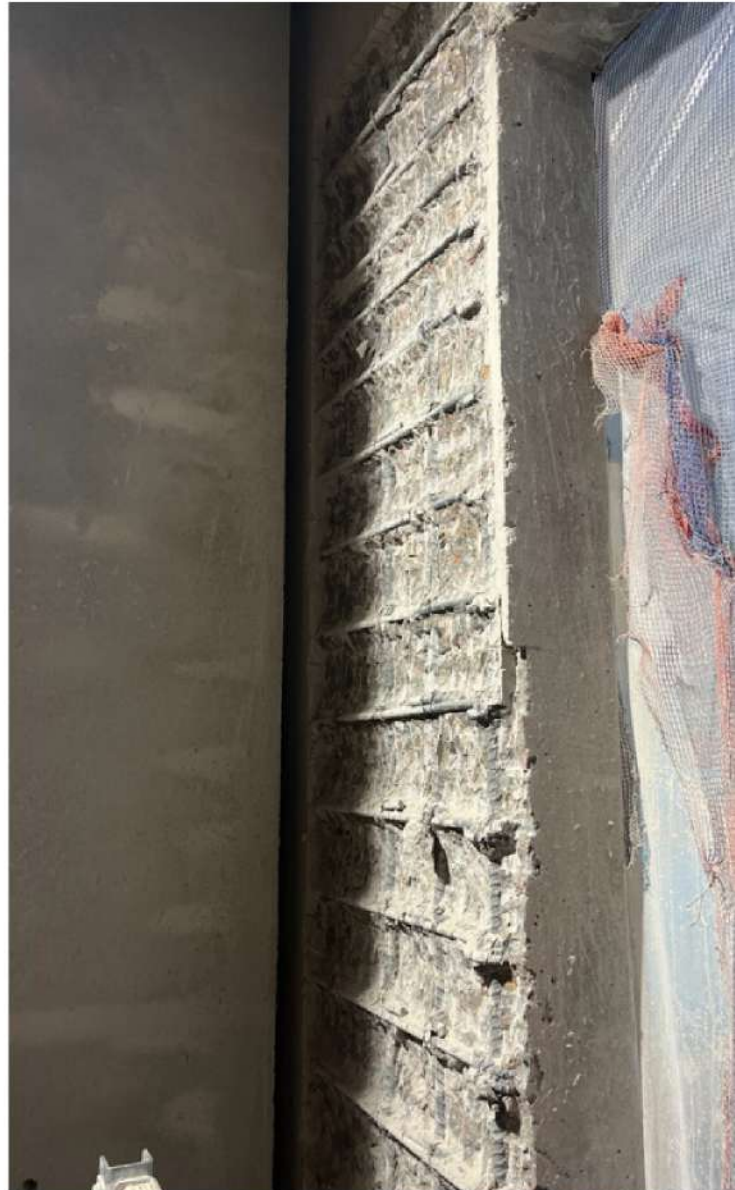


TILT-UP PRECAST CONCRETE PANEL STRENGTHENING

PUEBLO, COLORADO

On a recent new construction project in Colorado Springs, Colorado there was a clearance issue between the elevator shaft equipment and one of the tilt up panels that made up the shaft. By the time the conflict was noticed, the panels had been set and adjusting them was no longer an option.



In order to avoid the schedule and cost implications associated with resetting the panel, the General Contractor on the project reached out to Pinnacle Structural Services to see if CFRP could be a solution. Pinnacle has installed Structural Reinforcement Solutions products on multiple projects and reached out to SRS for assistance with the design.

CARBON FIBER STRENGTHENING SYSTEMS

Due to the clearance issue, the concrete cover and the entire leg of the #4 bands on the inside face of the panel had to be removed to provide enough clearance to allow the installation of the elevator equipment. The rebar that had to be removed was along the edge of the panel, adjacent to the elevator door openings.

The remaining sections of the panel were essentially treated like columns and wrapped horizontally with SRS-600UNI in order to make up for the lost confinement strength after the removal of the horizontal bands. SRS-660BI was utilized to provide crack control and improve the lap lengths with the main section of the panel.



SRS was able to work with the EOR, General Contractor, and Installer to come up with a PE stamped design for the application that minimized the cost and schedule impacts to the project. Once the design was complete, Pinnacle was able to complete the installation and the contractor was able to continue with construction.

Learn more at [Structuralrs.com](https://www.Structuralrs.com)

1-888-292-2592

Made in the USA

SRS STRUCTURAL
REINFORCEMENT SOLUTIONS